

Putnam Valley Central School District Special Education Budget Recommendations 2018-2019



October 2017 Snap Shot

Total Number Classified Students: 229

Least Restrictive Environment	General Education	80%	129
Least Restrictive Environment	General Education	40-79%	64
Least Restrictive Environment	General Education	<40%	15

October 2017 Snap Shot

Out of District Placements	
Elementary School	2
Middle School	3
High School	12
Homebound Instruction	3
Residential	1

Staffing Needs

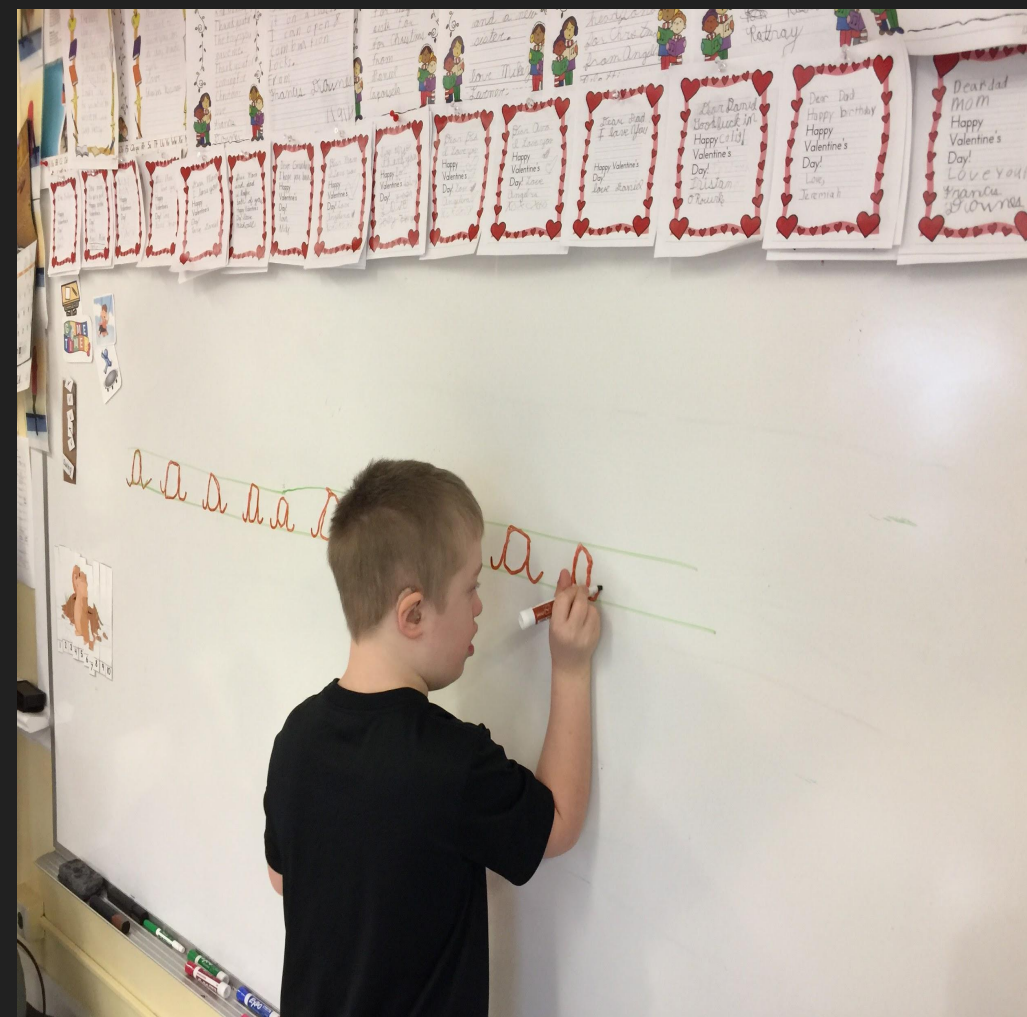
	2017-2018	2018-2019	Change
Assistant Superintendent	1	1	0
CPSE/CSE Chairperson	1	1	0
Clinicians	6	6	0
Speech Therapists	3.49	3.49	0
Special Education Teachers	28	27	-1
Teaching Aides	5	4	-1
Teaching Assistants	33	31	-2

Continuum of Services

- **Related Services**

- Counseling Services, Occupational, Physical and Speech Therapies

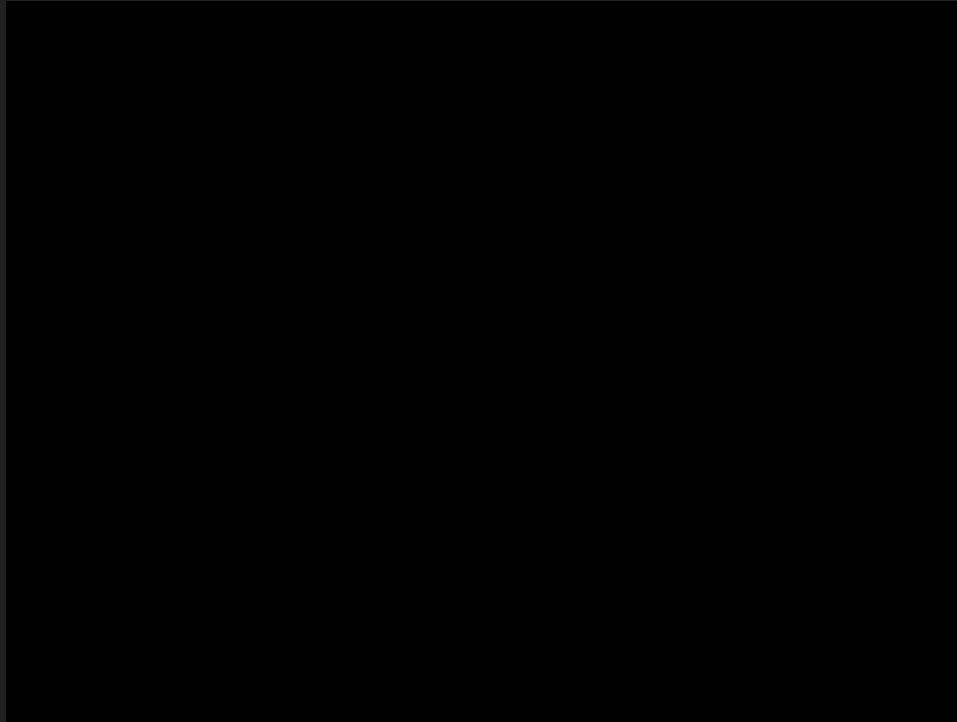




Learning Cursive and getting ready for Middle School

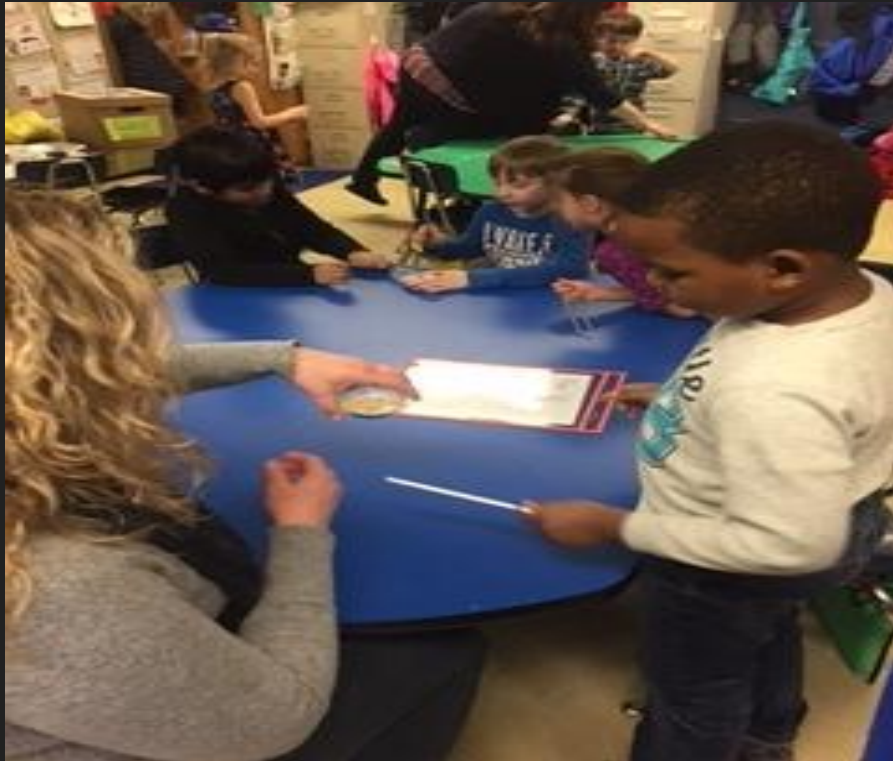
Continuum of Services

- **Resource Room**



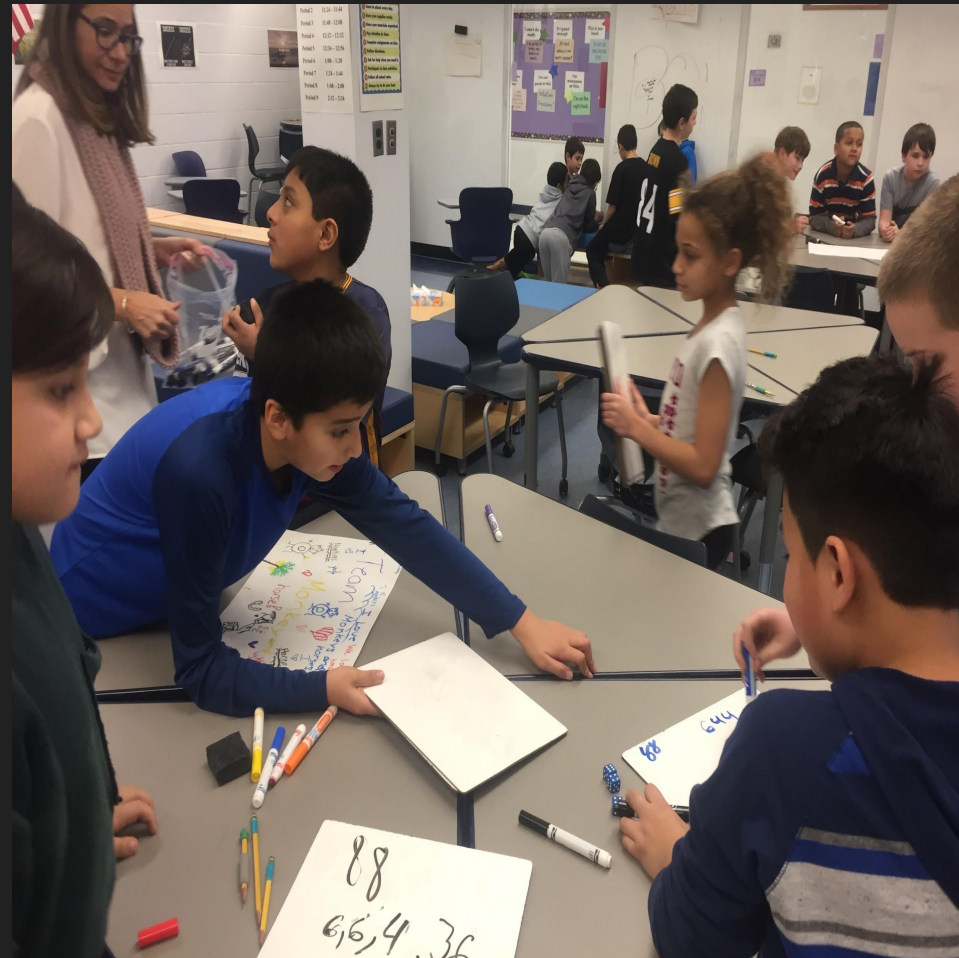
Continuum of Services

- **Consultant Teacher**
 - **Direct and Indirect**



Continuum of Services

- **Integrated Co-Teaching**



Continuum of Services

- **Specialized Class Setting**



New and Ongoing Initiatives

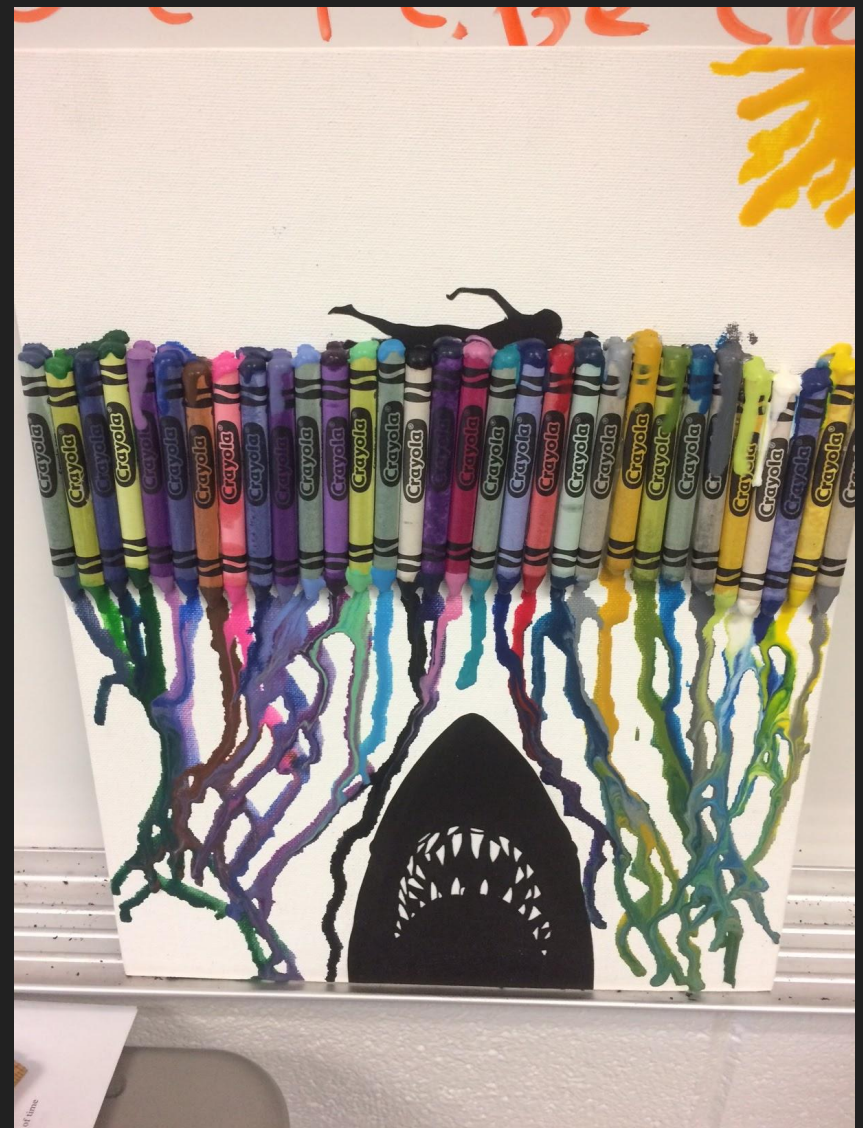
- Continue to refine how we deliver Specially Designed Instruction - Unique supports to meet an individual's learning needs - removing barriers as a result of a student's disability
- K-1-2 Decoding and Encoding Screenings to individualize reading intervention
- Universal Design for Learning
- Explore the use of Standards Based Assessments and rubrics to help special educators grade SWDs

New and Ongoing Initiatives

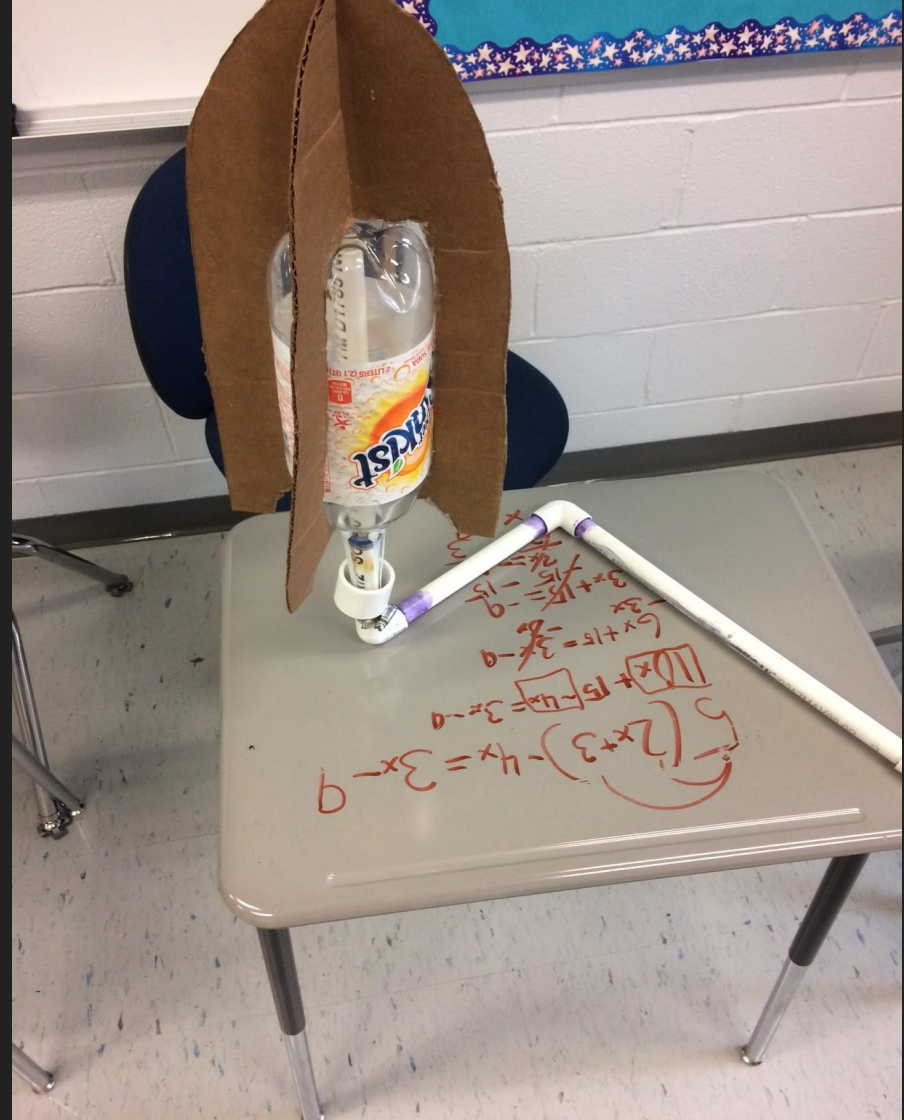
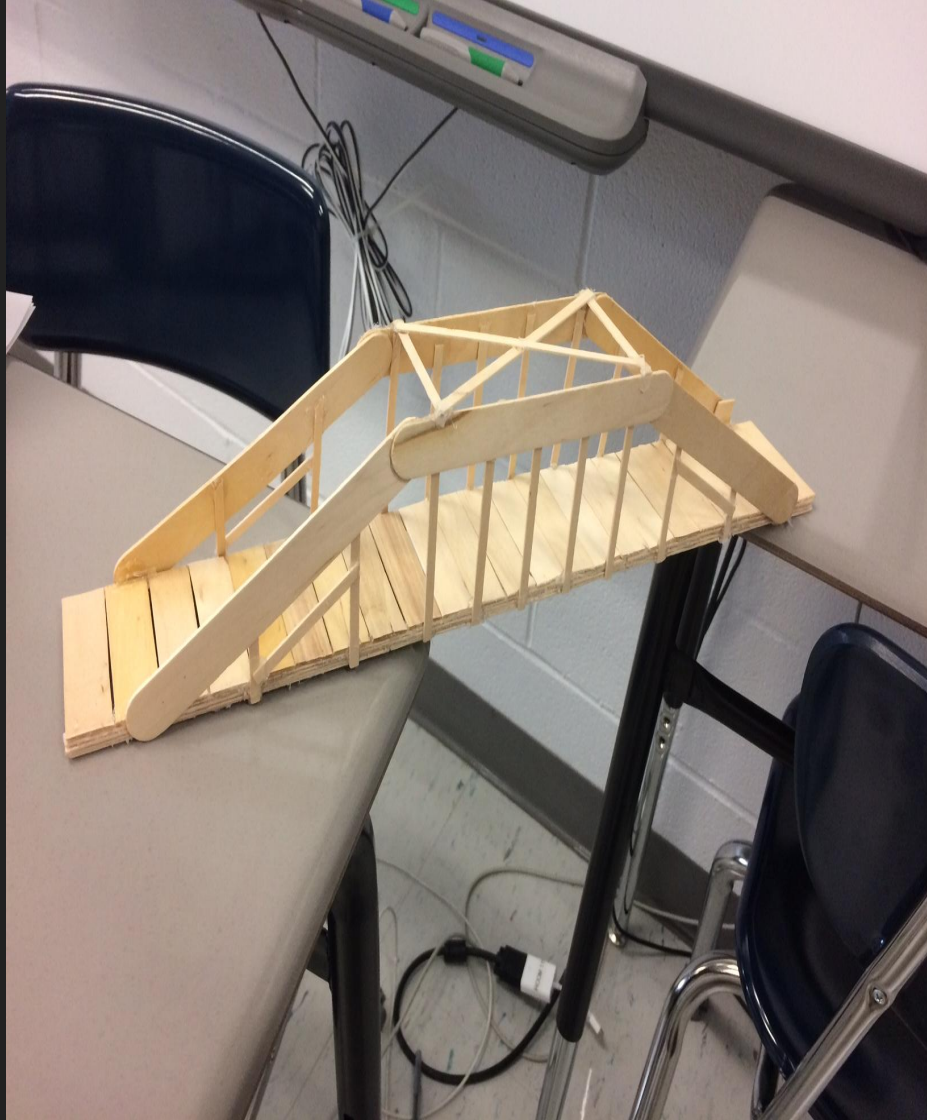
- Increase opportunities for SWD to participate in experiential learning opportunities
- Create a “hybrid” model for SWD in grades 7-12 using a Consultant Teacher or Co-teaching Model combined with a smaller class model



Ice Skating Trip - Building Relationships

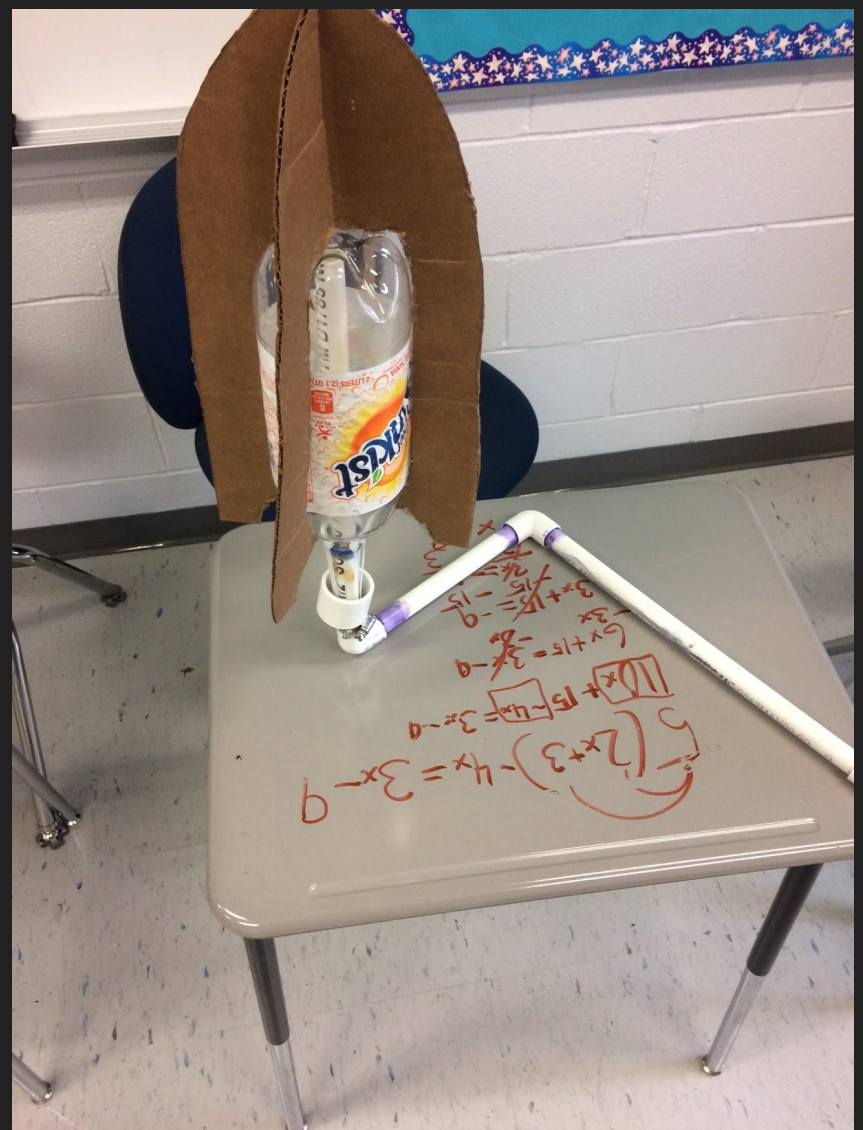
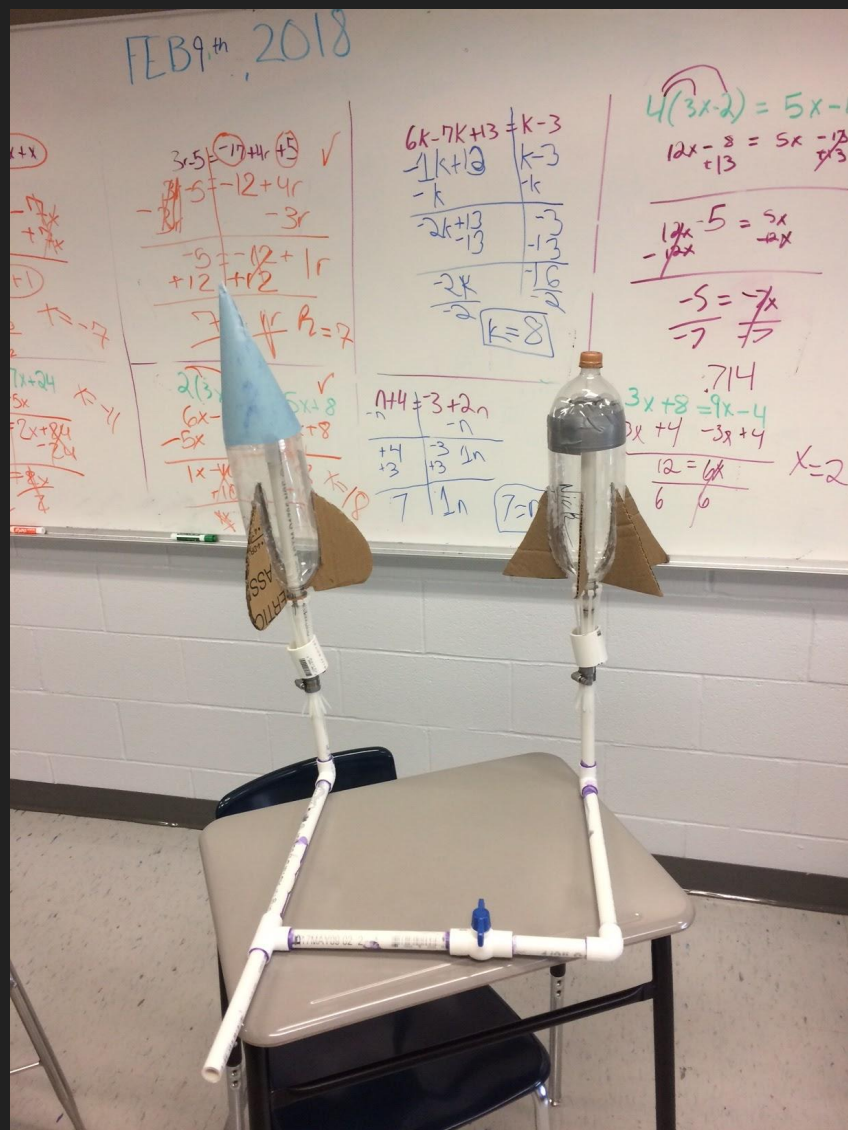


crayons/shark: Students created works of art by repurposing old crayons and making melted crayon art!



Bridge: Students looked at different bridge types, and created a bridge that had to span a gap of 14 inches. Bridges will be tested with weight until failure and we will calculate the ratio of the weight supported, to the weight of the bridge.

Rockets: Students researched and designed their own unique rocket launchers, then rockets to shoot. When the weather breaks, the rockets will be launched ~200ft into the air out on the football field!



New York State Initiatives on the Horizon

School Counseling

<http://www.p12.nysed.gov/sss/SchoolCounselingMemo.html>

New York State Initiatives on the Horizon

Multiple Pathways to Graduation

<http://www.p12.nysed.gov/ciai/gradreq/CurrentDiplomaRequirements.pdf>

Putnam Valley Central School District

Questions?